

# SUCTION HOSE COUPLING

GUNMETAL, 75 mm, AS PER IS:902



Suction Hose Couplings are connected to suction hoses using binding (with Copper/GI wire) or clamps, and allow connection of hoses to pumps, strainers, fittings, etc having similar threads. Suction couplings consist of Male and Female threaded parts, and have a serrated tail portion, on which the hose is mounted.

**Brief Description :** AAAG Suction Hose Male/ Female Couplings, 75 mm size, as per IS:902, made of Gunmetal, suitable for use with hard suction hoses. Couplings shall have standard round threads as per IS:902

## 1.0 GENERAL DATA

1.1	Make	AAAG
1.2	Size	75 mm
1.3	Type	Threaded (75 mm Round Threads)
1.4	Hose Connection	Shank 75 mm size
1.5	Material of Construction	Gunmetal
1.6	Reference	IS:902

## 2.0 MATERIAL OF CONSTRUCTION

2.1	Female Coupling	Gunmetal, IS:318 LTB-2
2.2	Nut for Female Coupling	Gunmetal, IS:318 LTB-2
2.3	Male Coupling	Gunmetal, IS:318 LTB-2
2.5	Washer	Rubber IS:937 Type A

## 3.0 TESTING AND QUALITY CONTROL

3.1	Dimensional check	See drawing below
3.2	Hydrostatic Pressure Test	21 kgf/cm <sup>2</sup> for 2.5 minutes
3.3	Documentation	Internal inspection report, supplier's certificates, approved laboratory test certificates

## 4.0 OPERATIONAL/ TECHNICAL DATA

4.1	Working Pressure Range	0 to 7 Kgf/cm <sup>2</sup>
4.2	Weight (approx.)	6.0 Kgs. (approx)

## 5.0 FINISH

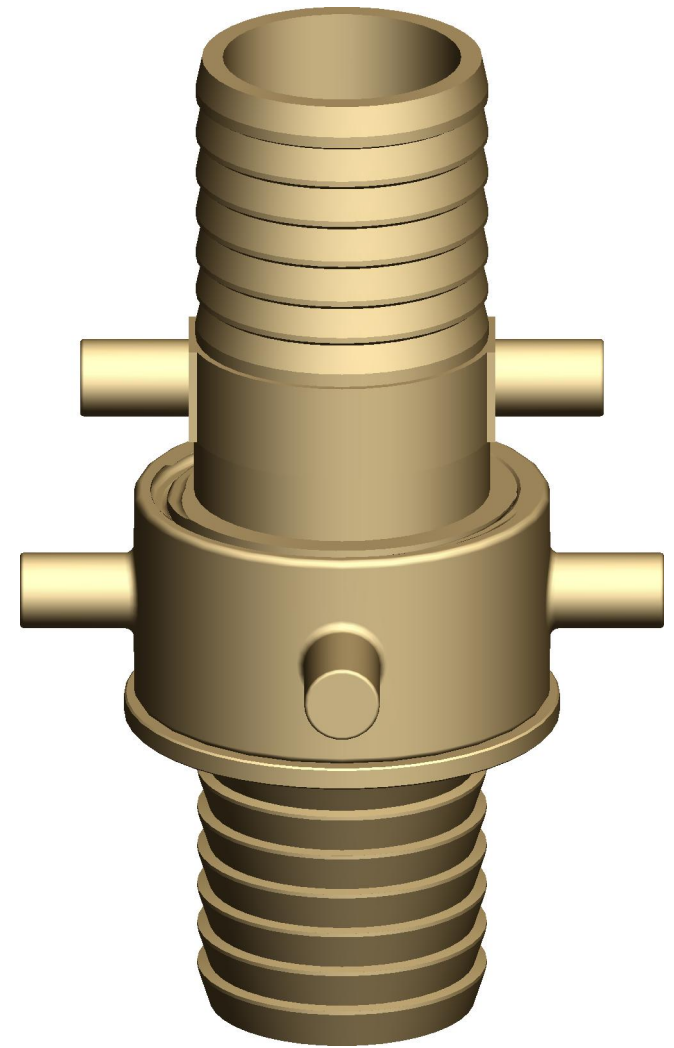
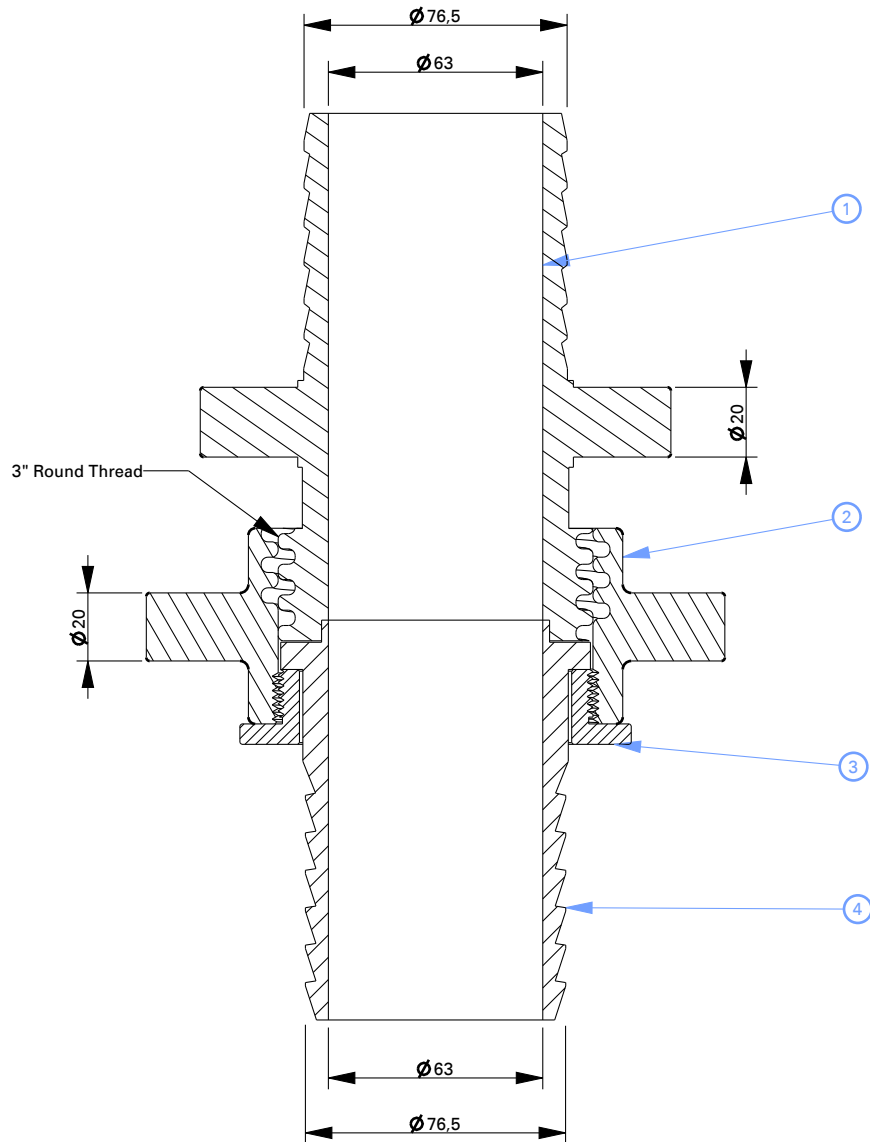
5.1	Coupling	Polished
-----	----------	----------

## 6.0 APPROVALS & MARKING

6.1	Approvals	--
6.2	Marking	AAAG/ Year of Mfg./SI No

## 7.0 WARRANTY

7.1	Warranty & Guarantee	12 Months from the date of supply
-----	----------------------	-----------------------------------



1	Female Coupling	G.M IS:318 LTB-2
2	Nut For Female Coupling	G.M IS:318 LTB-2
3	Locking Nut	G.M IS:318 LTB-2
4	Male Coupling	G.M IS:318 LTB-2
NO	DESCRIPTION	MATERIAL
PART LIST		



**Shah Bhogilal Jethalal & Bros.**

AHMEDABAD

**TITLE :** Suction Hose Coupling, Round Thread  
(75 mm), Gunmetal, As Per IS: 902

SCALE	DRAWING NO:	SHEET	REV.
N.T.S	G141-75AS	1 OF 1	0