

# ADAPTOR

SS316, 63 mm, MALE INST X MALE INST



Adaptors allow connection of delivery or suction hoses to different fittings/equipment, which have a dissimilar connecting arrangement, e.g. connecting hoses to equipment having threaded connections, connecting instantaneous hose couplings to flanged equipment, connecting hoses having similar couplings, or hoses of two different sizes, etc.

**Brief Description :** AAAG Male Instantaneous (63 mm) x Male Instantaneous (63 mm) Adaptor, made of Stainless Steel (SS316), suitable for use with Firefighting hoses and other equipment having Female couplings. Male Instantaneous adaptor shall be matching to standard Female coupling.

## 1.0 GENERAL DATA

1.1	Make	AAAG
1.2	Size	63 mm
1.3	Inlet	Male Instantaneous Adaptor, 63 mm size
1.4	Outlet	Male Instantaneous Adaptor, 63 mm size
1.5	Material of Construction	Stainless Steel (SS316)
1.6	Reference	--

## 2.0 MATERIAL OF CONSTRUCTION

2.1	Adaptor	SS316, IS:3444 Grade IV
-----	---------	-------------------------

## 3.0 TESTING AND QUALITY CONTROL

3.1	Dimensional check	See drawing below
3.2	Hydrostatic Pressure Test	21 kgf/cm <sup>2</sup> for 2.5 minutes
3.3	Documentation	Internal inspection report, supplier's certificates, approved laboratory test certificates

## 4.0 OPERATIONAL/ TECHNICAL DATA

4.1	Working Pressure Range	Upto 12 Kg/cm <sup>2</sup>
4.2	Weight (approx.)	0.9 Kgs. (approx)

## 5.0 FINISH

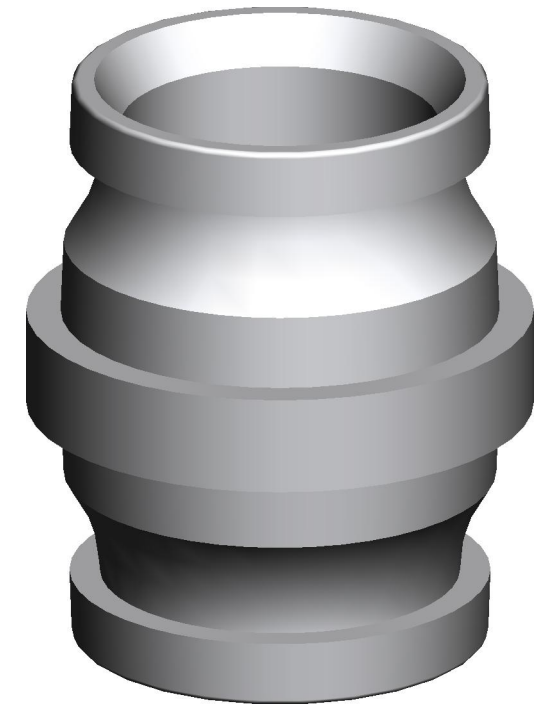
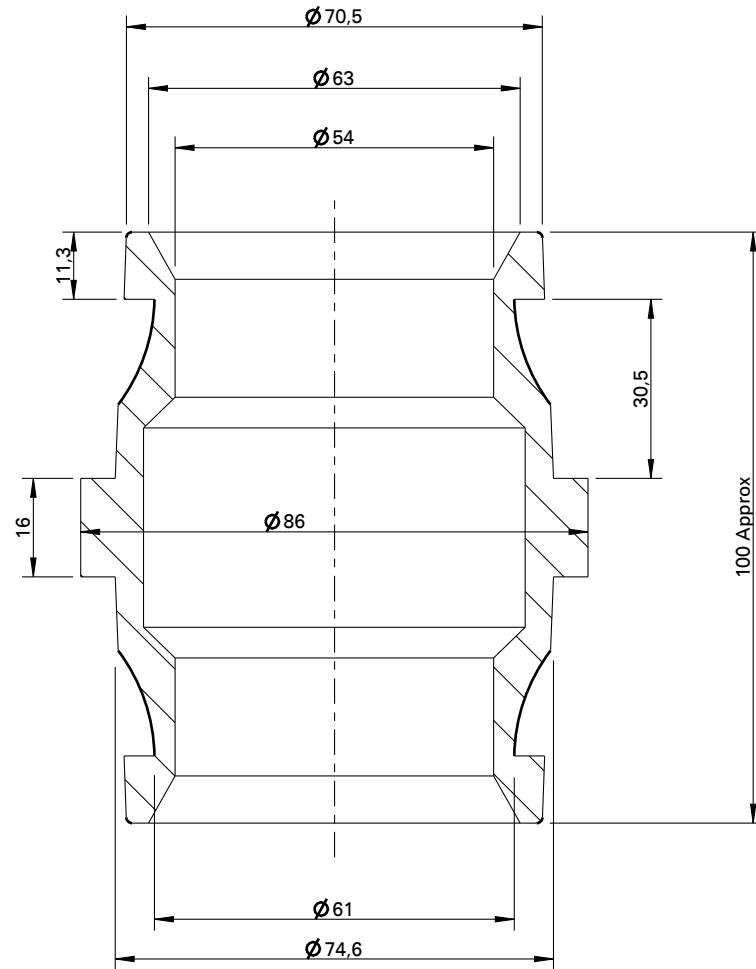
5.1	Adaptor	Polished
-----	---------	----------

## 6.0 APPROVALS & MARKING

6.1	Approvals	--
6.2	Marking	AAAG/ Year of Mfg./SI No

## 7.0 WARRANTY

7.1	Warranty & Guarantee	12 Months from the date of supply
-----	----------------------	-----------------------------------



**Shah Bhogilal Jethalal & Bros.**

AHMEDABAD

**TITLE :** Male Instantenous (63 mm) x Male Instantenous (63 mm) Adaptor, SS 316

SCALE	DRAWING NO:	SHEET	REV.
N.T.S	SM172-63BJ	1 OF 1	0