

## ADAPTOR

**SS304, 63 mm, FEMALE INST X FEMALE INST**



Adaptors allow connection of delivery or suction hoses to different fittings/equipment, which have a dissimilar connecting arrangement, e.g. connecting hoses to equipment having threaded connections, connecting instantaneous hose couplings to flanged equipment, connecting hoses having similar couplings, or hoses of two different sizes, etc.

**Brief Description :** AAAG Female Instantaneous (63 mm) x Female Instantaneous (63 mm) Adaptor, made of Stainless Steel (SS304), suitable for connection to Fire fighting equipment/hoses, having matching Male (63 mm) couplings. Each coupling will have two lugs each (this adaptor is especially useful where Hydrants are provided with Male Instantaneous outlets).

### 1.0 GENERAL DATA

|     |                          |   |
|-----|--------------------------|---|
| 1.1 | Make                     | AAAG                                    |
| 1.2 | Size                     | 63mm                                    |
| 1.3 | Inlet                    | Female Instantaneous adaptor, 63mm size |
| 1.4 | Outlet                   | Female Instantaneous adaptor, 63mm size |
| 1.5 | Material of Construction | Stainless Steel (SS304)                 |
| 1.6 | Reference                | --                                      |

### 2.0 MATERIAL OF CONSTRUCTION

|     |           |                        |
|-----|-----------|------------------------|
| 2.1 | Adaptor   | SS304, IS:3444 Grade I |
| 2.2 | Lugs      | SS304, IS:3444 Grade I |
| 2.3 | Cam Tooth | SS304, IS:3444 Grade I |
| 2.4 | Washer    | Rubber, IS:937         |

### 3.0 TESTING AND QUALITY CONTROL

|     |                           |  |
|-----|---------------------------|--|
| 3.1 | Dimensional check         | See drawing below  |
| 3.2 | Hydrostatic Pressure Test | 21 kgf/cm <sup>2</sup> for 2.5 minutes   |
| 3.3 | Documentation             | Internal inspection report, supplier's certificates, approved laboratory test certificates |

### 4.0 OPERATIONAL/ TECHNICAL DATA

|     |                        |                             |
|-----|------------------------|-----------------------------|
| 4.1 | Working Pressure Range | Upto 12 Kgf/cm <sup>2</sup> |
| 4.2 | Weight (approx.)       | 2.7 Kgs. (approx)           |

### 5.0 FINISH

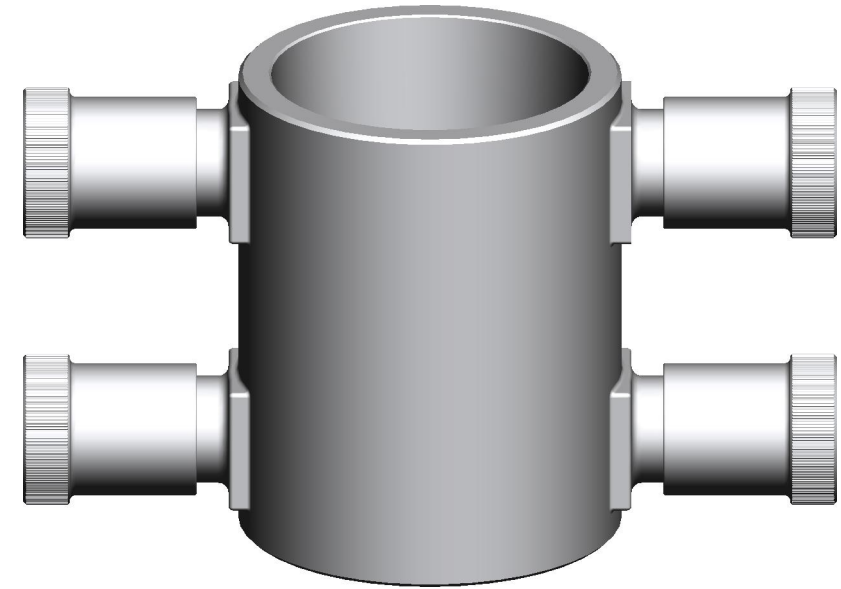
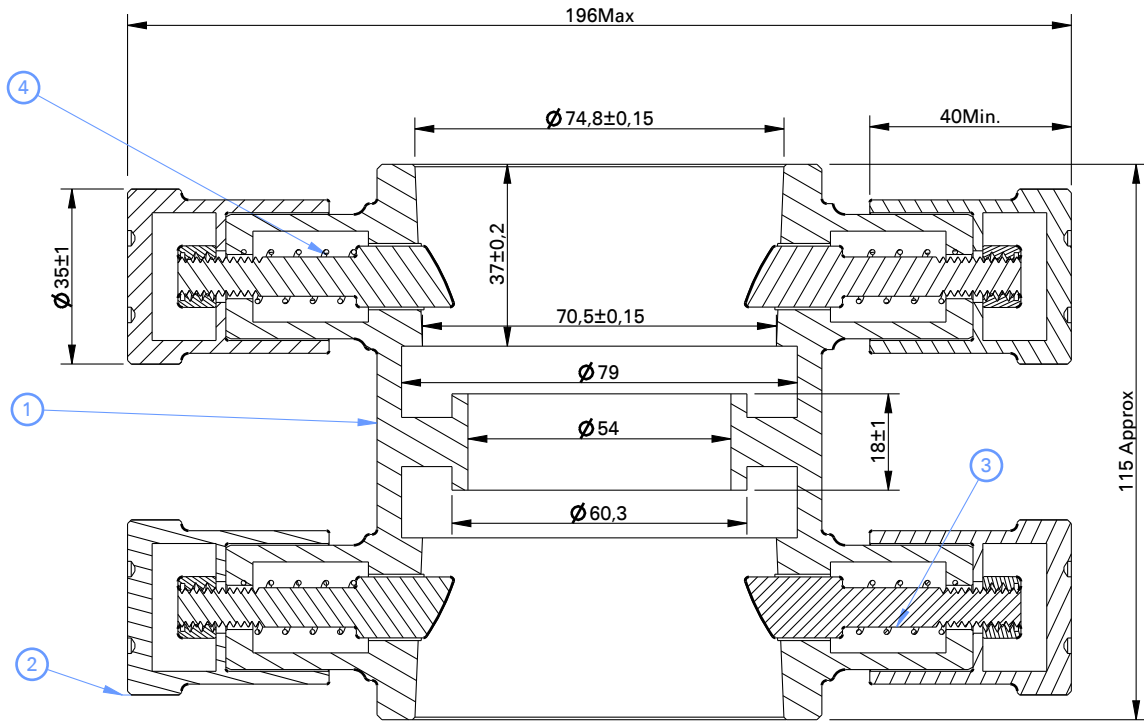
|     |         |          |
|-----|---------|----------|
| 5.1 | Adaptor | Polished |
|-----|---------|----------|

### 6.0 APPROVALS & MARKING

|     |           |                          |
|-----|-----------|--------------------------|
| 6.1 | Approvals | --                       |
| 6.2 | Marking   | AAAG/ Year of Mfg./SI No |

### 7.0 WARRANTY

|     |                      |                                   |
|-----|----------------------|-----------------------------------|
| 7.1 | Warranty & Guarantee | 12 Months from the date of supply |
|-----|----------------------|-----------------------------------|



| 1         | BODY        | S.S 304 (IS: 3444 Gr.1) |
|-----------|-------------|-------------------------|
| 2         | LUG         | S.S 304 (IS: 3444 Gr.1) |
| 3         | CAM TOOTH   | S.S 304 (IS: 3444 Gr.1) |
| 4         | SPRING      | IS:6528                 |
| NO        | DESCRIPTION | MATERIAL                |
| PART LIST |             |                         |



**Shah Bhogilal Jethalal & Bros.**

AHMEDABAD

**TITLE :**

Female Instantaneous (63 mm) x Female Instantaneous (63 mm) Adaptor, SS 304

**SCALE**

N.T.S

**DRAWING NO:**

S171-63BJ

**SHEET**

1 OF 1

**REV.**

0