

# STANDPOST MONITOR

CARBON STEEL, 100 mm WATERWAY, ISI MARKED



Standpost monitors are used in fire fighting for applying large quantity of water/foam from a distance onto the risk area. The monitors are normally installed onto stand posts, fitted onto the fire water network, or mounted on trailers/trolleys. Manual swivel joints allow operators to adjust the position of the monitor (or leave it unattended, if required).

**Brief Description :** AAAG Stand Post type monitor, ISI Marked (IS:8442), nominal waterway size 100 mm, flow capacity 3500 lpm at 7 kg/cm<sup>2</sup> inlet pressure. Monitor shall be constructed of M.S. pipes/ bends, Gunmetal Swivel Joints (manual), have suitable inlet flange and solid jet nozzle of specified capacity. Monitor shall give minimum throw as specified in IS:8442.

## 1.0 GENERAL DATA

1.1	Make	AAAG
1.2	Model	Stand Post Type Monitor (100 mm Waterway)
1.3	Inlet	Flanged - 100 NB IS:1538/ ANSI B16.5 150#
1.4	Outlet	45 mm (min) bore Solid Jet Nozzle
1.5	Material of Construction	Carbon Steel
1.6	Reference	IS:8442 - Specification for stand post type water monitor

## 2.0 MATERIAL OF CONSTRUCTION

2.1	Base Flange	Carbon (Mild) Steel IS: 2062 /IS: 2004 (ASTM A 105)
2.2	Water barrel (pipe)	Carbon (Mild) Steel IS1239 Part-1 Seamless (ASTM A 106 Gr.B)
2.3	Swivel Joint	GM/ SS (IS: 318 LTB-2/ IS: 3444 Gr. 1)
2.4	Bends	Carbon (Mild) Steel IS: 4310
2.5	Handle	Carbon (Mild) Steel IS: 1732(2062)
2.6	Nozzle	Alu. IS: 617/ Gunmetal IS: 318 LTB-2/ SS304/316 (IS: 3444 Gr. I/IV)

## 3.0 TESTING AND QUALITY CONTROL

3.1	Dimensional check	As per IS:8442 (See drawing below)
3.2	Hydrostatic Pressure Test	25 kgf/cm <sup>2</sup> for 5 minutes (Monitor only)
3.3	Performance Requirements	<u>Flow test with monitor at 30° elevation, in still wind conditions</u> Flow 3500 lpm (min) at 7 kg/cm <sup>2</sup> , Range 64 Mtrs (min)
3.4	Documentation	Internal inspection report, supplier's certificates, approved laboratory test certificates

## 4.0 OPERATIONAL/ TECHNICAL DATA

4.1	Working pressure	5 to 14 Kg/cm <sup>2</sup>
4.2	Manouverability	+90°/ -45° in vertical plane, 360° in horizontal plane
4.3	Weight (approx.)	---

## 5.0 FINISH

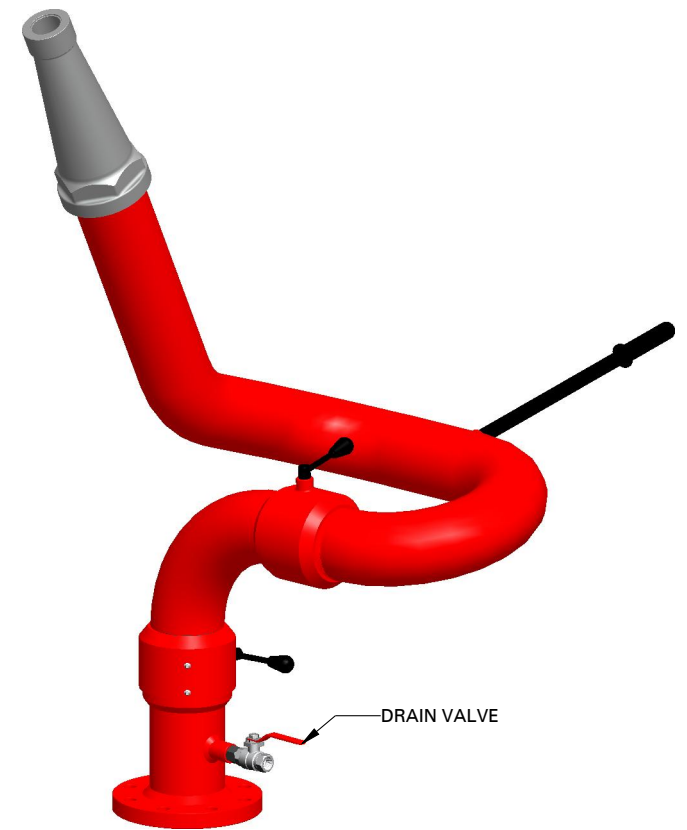
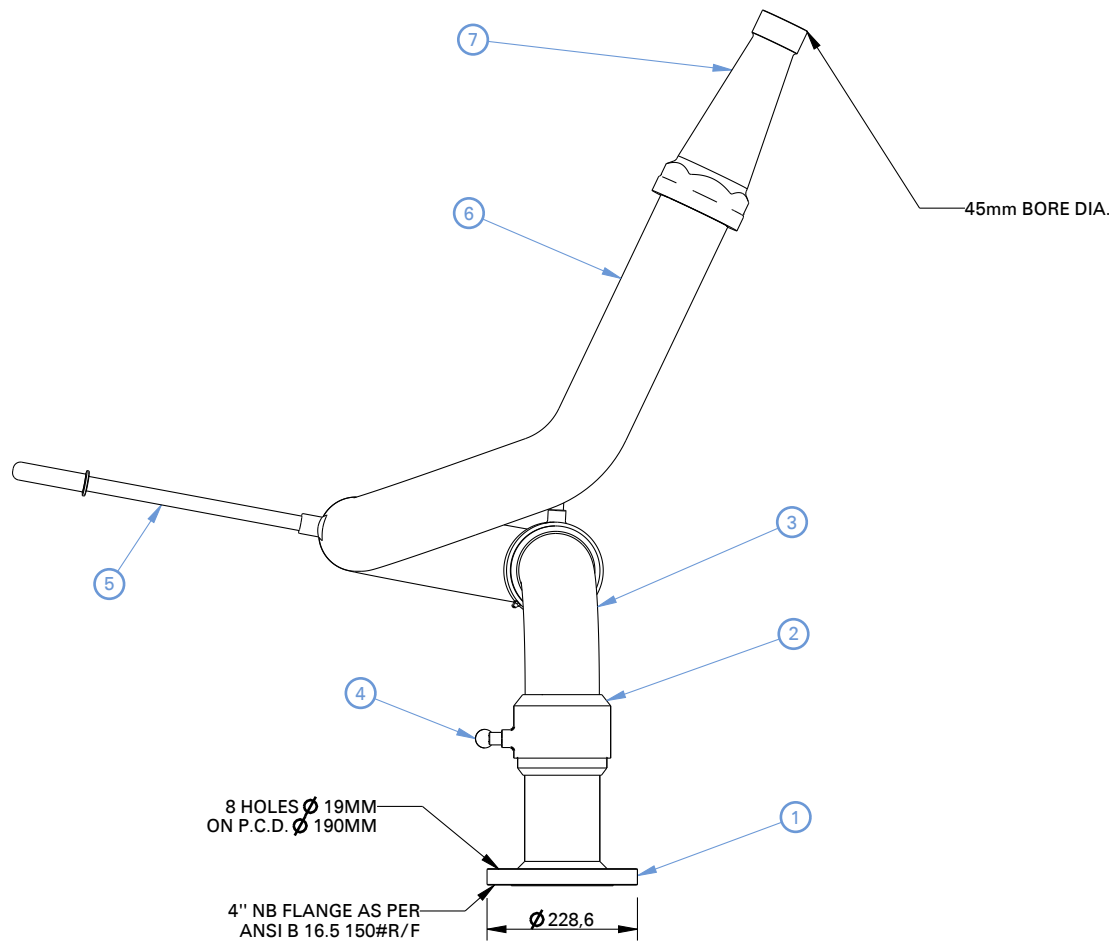
5.1	Body	Hot Dip Galvanised, painted Fire Red Color IS: 5 Shade No 536
5.2	Handle	Painted Black Paint
5.3	Swivel Joints & Nozzle	Polished

## 6.0 APPROVALS & MARKING

6.1	Approvals	--
6.2	Marking on Nozzle	Model/ Capacity/ Year of Mfg./ Sl. No

## 7.0 WARRANTY

7.1	Warranty & Guarantee	12 Months from the date of supply
-----	----------------------	-----------------------------------



**NOTES:**

- 01. **ANTI CORROSIVE TREATMENT & PAINTING:**  
M.S. COMPONENTS ARE HOT DIP GALVANISED TO 0.012mm. AND EXTERNAL PAINTING WITH 2 COATS OF FIRE RED COLOUR AS PER IS:5 SHADE NO.536.
- 02. **PERFORMANCE TEST: DISCHARGE CAPACITY:**  
3500 LPM. AT A PRESSURE OF 7KGF/CM2. 64MTR. (WATER). HORIZONTALLY AT 30° TRAJECTORY FOR WATER IN STILL WIND CONDITION.
- 03. **ROTATION :**  
360° IN EITHER DIRECTION IN THE HORIZONTAL PLANE & 125° IN THE VERTICAL PLANE (+80°, - 45°) WITH SEPERATE LOCKING ARRANGEMENT.
- 04. **HYDROSTATIC PRESSURE TEST :**  
23 KGF/CM2. (FOR 5 MINUTES) - WITHOUT NOZZLE

1	FLANGE	M.S. IS:2062
2	SWIVEL JOINT	G.M.IS:318,LTB-II
3	BENDS	M.S. IS:4310
4	LEVER LOCK	BRASS IS:291
5	HANDLE	M.S. IS:1732(2062)
6	WATER BARREL	IS:1239,PART-1
7	NOZZLE	ALU. IS:617

NO	DESCRIPTION	MATERIAL
<b>PART LIST</b>		



**Shah Bhogilal Jethalal & Bros.**

AHMEDABAD

**TITLE :**

Monitor, 100 mm Waterway, Manual Swivel,  
Carbon Steel, ISI Marked

SCALE	DRAWING NO:	SHEET	REV.
N.T.S	M195- 100IS	1 OF 1	0