

HYDRANT VALVE, SINGLE OUTLET

STAINLESS STEEL-SS316, FM APPROVED



Hydrant valves (also called Landing valves) provide the means to draw water for firefighting from the Fire water piping network. They are normally mounted onto stand posts, fitted on the fire water network.

Brief Description : Hydrant Valve – Single Outlet, FM Approved, made of Stainless Steel (SS316), having 75 mm flanged inlet, and 63 mm Female Instantaneous outlet, provided with C.I. hand wheel for operation, and PVC blank cap with chain. Body duly painted with 2 coats of superior quality paint. H.P. tested to 50 kgf/cm² (Body), 12.3 kgf/cm² (Seat), 21 kgf/cm² (Seal) for 5 min.

1.0 GENERAL DATA

1.1	Make	AAAG
1.2	Size	63 mm
1.3	Inlet	Flanged - 75mm, ANSI B 16.5 150 #
1.4	Outlet	63mm Female Instantaneous Adaptor
1.5	Reference Standard	FM 1521

2.0 MATERIAL OF CONSTRUCTION

2.1	Body, Bonnets, Female outlet and parts	SS316, SAE Std No. 316
2.2	Spindle	SS316, SAE Std No. 316
2.3	Spring	Stainless Steel Wire, SAE Std No. 316
2.4	Hand Wheel	Cast Iron
2.5	Washer	Natural Rubber

3.0 TESTING AND QUALITY CONTROL

3.1	Dimensional check	Dimensions as per SBJ Drawing (See below)
3.2	Seat Leakage Test	12.3 kgf/cm ² for 5 minutes.
3.3	Valve Body Test	50 kgf/cm ² for 5 minutes.
3.4	Stem Seal Test	21 kgf/cm ² for 5 minutes. 72 hours aging at 120 °F, then repeat test.
3.5	Torque Test	Sealing of seat at max. 75 ft/lb.
3.6	Documentation	Internal inspection report, supplier's certificates, approved laboratory test certificates

4.0 OPERATIONAL/ TECHNICAL DATA

4.1	Working pressure range	upto 20 Kg/cm ²
4.2	Weight (approx.)	4.0 Kgs.

5.0 FINISH

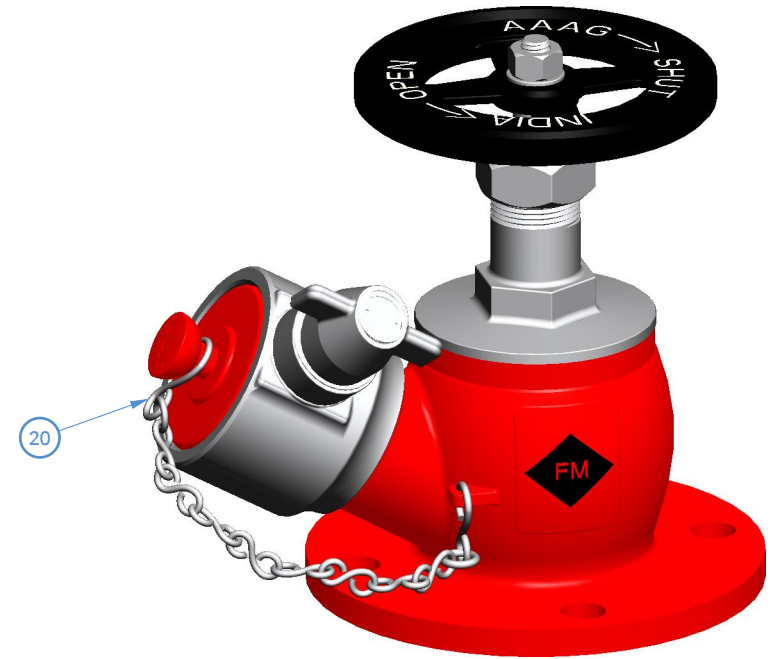
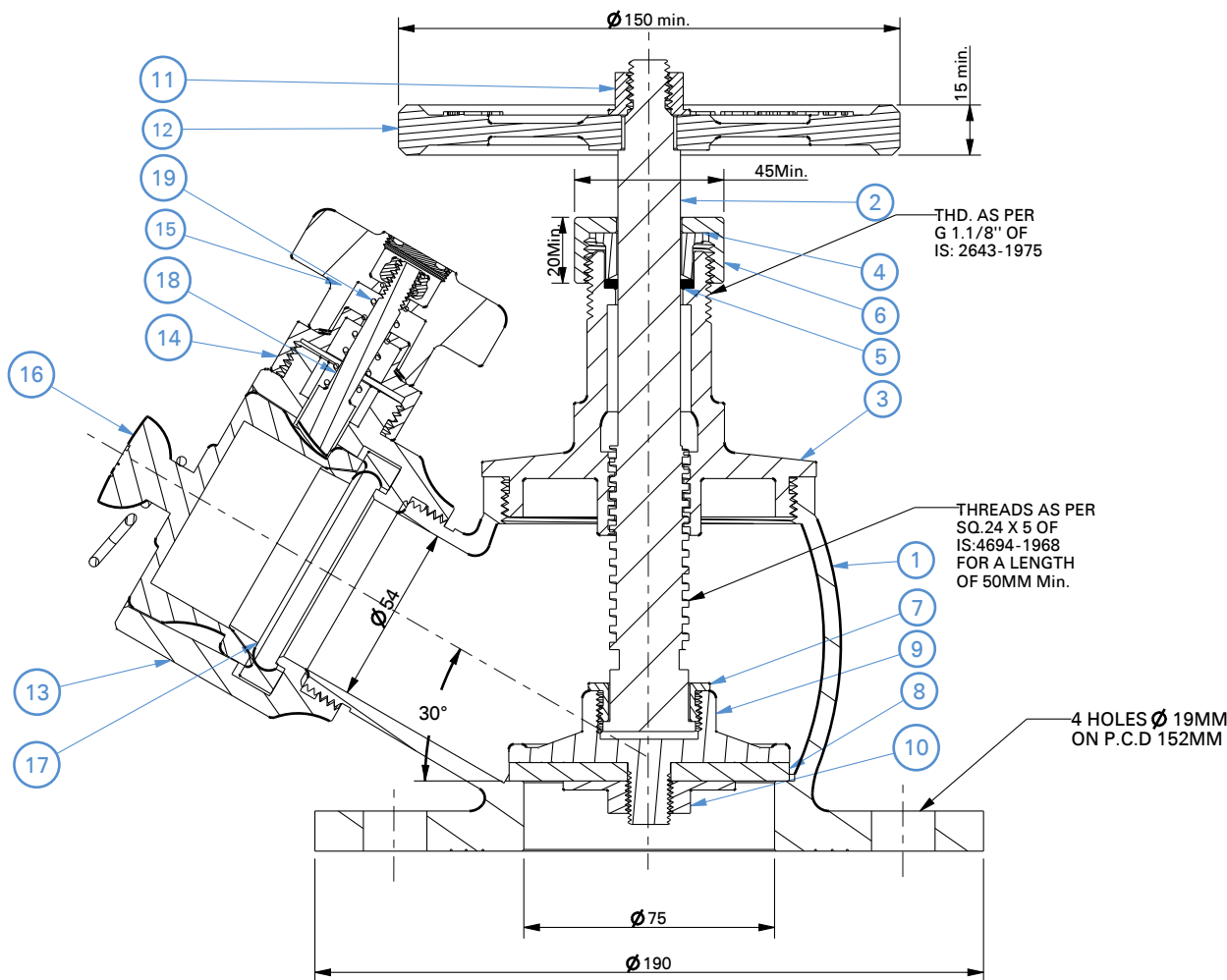
5.1	Body	Painted - Fire Red Color as per IS: 5 Shade No. 536
5.2	Wheel	Painted - Black Paint
5.3	Parts	Polished

6.0 APPROVALS & MARKING

6.1	Approvals	FM Approved (No. 0003040344)
6.2	Marking on Hydrant valve	BHOJEBROS / Size/ Year of Manufacture/ FM Mark/ AI No

7.0 WARRANTY

7.1	Warranty & Guarantee	12 Months from the date of supply
-----	----------------------	-----------------------------------



HYDRAULIC TEST:

Dimensional Check	Dimensions as per SBJ Drawing No. (See below)
Seat Leakage Test	12.3 kgf/cm ² for 5 minutes.
Valve Body Test	50 kgf/cm ² for 5 minutes.
Stem Seal Test	21 kgf/cm ² for 5 minutes. 72 hours aging at 120° F, then repeat test.
Torque Test	Sealing of seat at max. 75 ft/lb.
Documentation	internal inspection report, supplier's certificates, approved laboratory test certificates.

1	BODY	SS316, SAE Std No.304	11	HEX.NUT	M.S.
2	SPINDLE	SS316, SAE Std No.304	12	HAND WHEEL	C.I. IS : 210
3	BONNET	SS316, SAE Std No.304	13	FEMALE OUTLET	SS316, SAE Std No.304
4	GLAND BUSH	SS316, SAE Std No.304	14	LOWER LUG	SS316, SAE Std No.304
5	GLAND PACKING	ASBESTOSE ROPE	15	UPPER LUG	SS316, SAE Std No.304
6	GLAND NUT	SS316, SAE Std No.304	16	BLANK CAP	PVC
7	CHECK NUT (SPINDLE)	SS316, SAE Std No.304	17	RUBBER RING	NATURAL RUBBER
8	SEAT WASHER	NATURAL RUBBER	18	CAM TOOTH	SS316, SAE Std No.304
9	STOP VALVE	SS316, SAE Std No.304	19	SPRING	SS Wire, SAE Std No.304
10	SEAT CHECK NUT	SS316, SAE Std No.304	20	CHAIN	GALVANIZED
NO.	DESCRIPTION	MATERIAL	NO.	DESCRIPTION	MATERIAL
PART LIST			PART LIST		



Shah Bhogilal Jethalal & Bros.

AHMEDABAD

TITLE :

Hydrant Valve, Single Outlet (63 mm),
SS316, FM Approved

SCALE

N.T.S

DRAWING NO:

SM104-63FM

SHEET

1 OF 1

REV.

0