

# HYDRANT VALVE, SINGLE OUTLET

## STAINLESS STEEL-SS304, FM APPROVED



Hydrant valves (also called Landing valves) provide the means to draw water for firefighting from the Fire water piping network. They are normally mounted onto stand posts, fitted on the fire water network.

**Brief Description :** Hydrant Valve – Single Outlet, FM Approved, made of Stainless Steel (SS304), having 75 mm flanged inlet, and 63 mm Female Instantaneous outlet, provided with C.I. hand wheel for operation, and PVC blank cap with chain. Body duly painted with 2 coats of superior quality paint. H.P. tested to 50 kgf/cm<sup>2</sup> (Body), 12.3 kgf/cm<sup>2</sup> (Seat), 21 kgf/cm<sup>2</sup> (Seal) for 5 min.

### 1.0 GENERAL DATA

1.1	Make	AAAG
1.2	Size	63 mm
1.3	Inlet	Flanged - 75mm, ANSI B 16.5 150 #
1.4	Outlet	63mm Female Instantaneous Adaptor
1.5	Reference Standard	FM 1521

### 2.0 MATERIAL OF CONSTRUCTION

2.1	Body, Bonnets, Female outlet and parts	SS316, SAE Std No. 304
2.2	Spindle	SS316, SAE Std No. 304
2.3	Spring	Stainless Steel Wire, SAE Std No. 304
2.4	Hand Wheel	Cast Iron
2.5	Washer	Natural Rubber

### 3.0 TESTING AND QUALITY CONTROL

3.1	Dimensional check	Dimensions as per SBJ Drawing (See below)
3.2	Seat Leakage Test	12.3 kgf/cm <sup>2</sup> for 5 minutes.
3.3	Valve Body Test	50 kgf/cm <sup>2</sup> for 5 minutes.
3.4	Stem Seal Test	21 kgf/cm <sup>2</sup> for 5 minutes. 72 hours aging at 120 °F, then repeat test.
3.5	Torque Test	Sealing of seat at max. 75 ft/lb.
3.6	Documentation	Internal inspection report, supplier's certificates, approved laboratory test certificates

### 4.0 OPERATIONAL/ TECHNICAL DATA

4.1	Working pressure range	upto 20 Kg/cm <sup>2</sup>
4.2	Weight (approx.)	4.0 Kgs.

### 5.0 FINISH

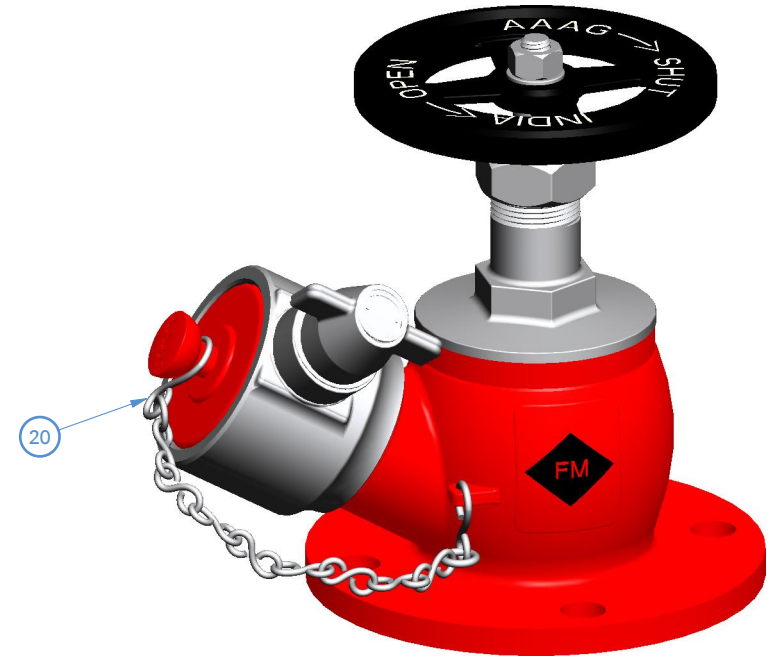
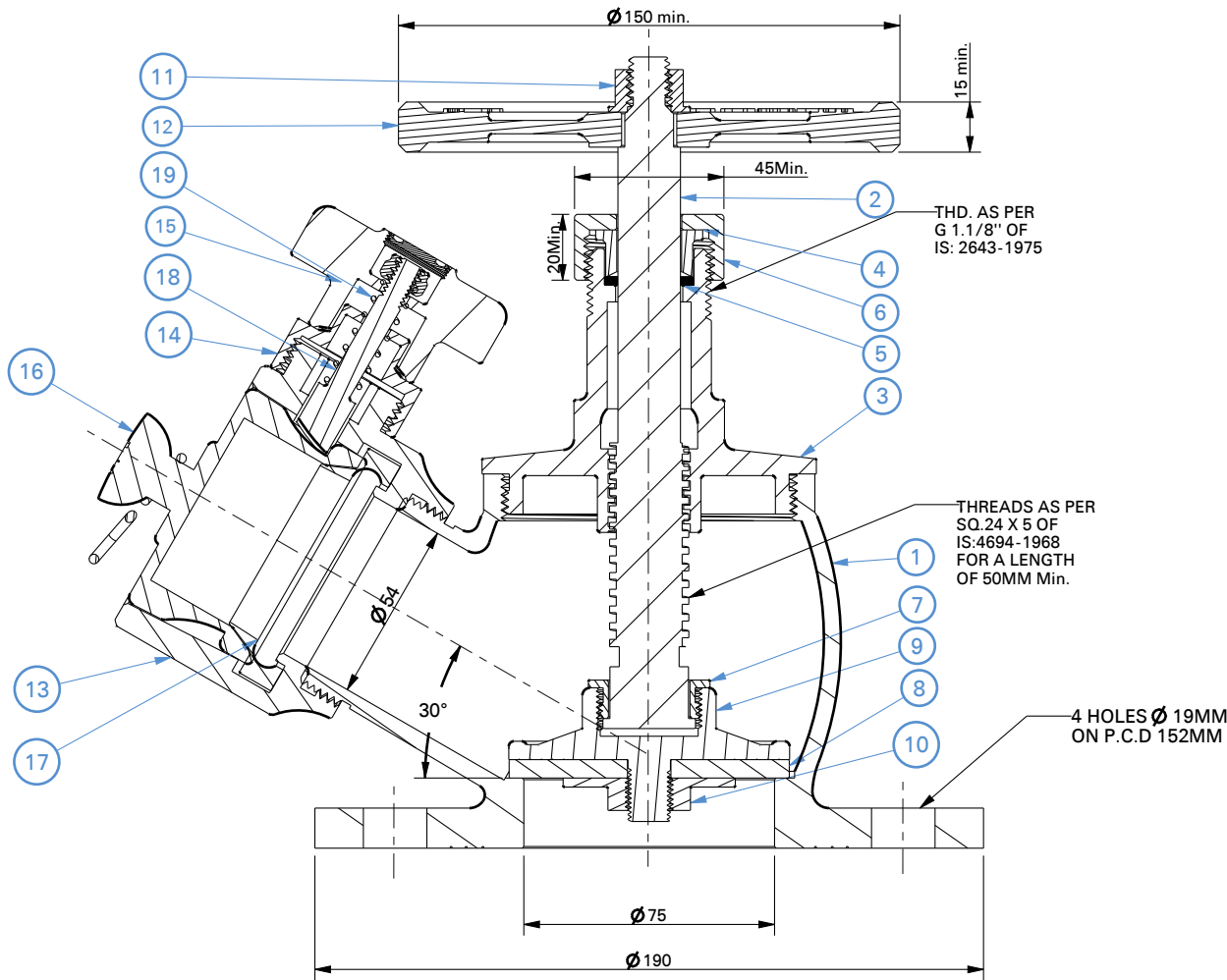
5.1	Body	Painted - Fire Red Color as per IS: 5 Shade No. 536
5.2	Wheel	Painted - Black Paint
5.3	Parts	Polished

### 6.0 APPROVALS & MARKING

6.1	Approvals	FM Approved (No. 0003040344)
6.2	Marking on Hydrant valve	BHOJEBROS / Size/ Year of Manufacture/ FM Mark/ AI No

### 7.0 WARRANTY

7.1	Warranty & Guarantee	12 Months from the date of supply
-----	----------------------	-----------------------------------



**HYDRAULIC TEST:**

Dimensional Check	Dimensions as per SBJ Drawing No. (See below)
Seat Leakage Test	12.3 kgf/cm <sup>2</sup> for 5 minutes.
Valve Body Test	50 kgf/cm <sup>2</sup> for 5 minutes.
Stem Seal Test	21 kgf/cm <sup>2</sup> for 5 minutes. 72 hours aging at 120° F, then repeat test.
Torque Test	Sealing of seat at max. 75 ft/lb.
Documentation	internal inspection report, supplier's certificates, approved laboratory test certificates.

1	BODY	SS304, SAE Std No.316	11	HEX.NUT	M.S.
2	SPINDLE	SS304, SAE Std No.316	12	HAND WHEEL	CAST IRON
3	BONNET	SS304, SAE Std No.316	13	FEMALE OUTLET	SS304, SAE Std No.316
4	GLAND BUSH	SS304, SAE Std No.316	14	LOWER LUG	SS304, SAE Std No.316
5	GLAND PACKING	ASBESTOSE ROPE	15	UPPER LUG	SS304, SAE Std No.316
6	GLAND NUT	SS304, SAE Std No.316	16	BLANK CAP	PVC
7	CHECK NUT (SPINDLE)	SS304, SAE Std No.316	17	RUBBER RING	NATURAL RUBBER
8	SEAT WASHER	NATURAL RUBBER	18	CAM TOOTH	SS304, SAE Std No.316
9	STOP VALVE	SS304, SAE Std No.316	19	SPRING	SS WIRE, SAE Std No.304
10	SEAT CHECK NUT	SS304, SAE Std No.316	20	CHAIN	GALVANIZED
<b>NO.</b>	<b>DESCRIPTION</b>	<b>MATERIAL</b>	<b>NO.</b>	<b>DESCRIPTION</b>	<b>MATERIAL</b>
<b>PART LIST</b>			<b>PART LIST</b>		



**Shah Bhogilal Jethalal & Bros.**

AHMEDABAD

**TITLE :** Hydrant Valve, Single Outlet (63 mm), SS304, FM Approved

<b>SCALE</b>	<b>DRAWING NO:</b>	<b>SHEET</b>	<b>REV.</b>
N.T.S	S104-63FM	1 OF 1	0