

HYDRANT VALVE, SINGLE OUTLET

GUNMETAL, FM APPROVED



Hydrant valves (also called Landing valves) provide the means to draw water for firefighting from the Fire water piping network. They are normally mounted onto stand posts, fitted on the fire water network.

Brief Description : Hydrant Valve – Single Outlet, FM Approved, made of Red Brass Casting (Gun Metal), having 75 mm flanged inlet, and 63 mm Female Instantaneous outlet, provided with C.I. hand wheel for operation, and PVC blank cap with chain. Body duly painted with 2 coats of superior quality paint. H.P. tested to 50 kgf/cm² (Body), 12.3 kgf/cm² (Seat), 21 kgf/cm² (Seal) for 5 min.

1.0 GENERAL DATA

1.1	Make	AAAG
1.2	Size	63 mm
1.3	Inlet	Flanged - 80mm (75mm) NB IS: 1538 / ANSI B 16.5 150 #
1.4	Outlet	63mm Female Inst. Adaptor
1.5	Reference Standard	FM 1521

2.0 MATERIAL OF CONSTRUCTION

2.1	Body, Bonnets, Female outlet and parts	Red Brass Casting (Gunmetal), SAE Std No. 40
2.2	Spindle	Brass, SAE Std No. 72
2.3	Spring	Phosphor Bronze Wire, SAE Std No. 72
2.4	Hand Wheel	Cast Iron
2.5	Washer	Natural Rubber

3.0 TESTING AND QUALITY CONTROL

3.1	Dimensional check	Dimensions as per SBJ Drawing (See below)
3.2	Seat Leakage Test	12.3 kgf/cm ² for 5 minutes.
3.3	Valve Body Test	50 kgf/cm ² for 5 minutes.
3.4	Stem Seal Test	21 kgf/cm ² for 5 minutes. 72 hours aging at 120 °F, then repeat test.
3.5	Torque Test	Sealing of seat at max. 75 ft/lb.
3.6	Documentation	Internal inspection report, supplier's certificates, approved laboratory test certificates

4.0 OPERATIONAL/ TECHNICAL DATA

4.1	Working pressure range	upto 20 Kg/cm ²
4.2	Weight (approx.)	4.0 Kgs.

5.0 FINISH

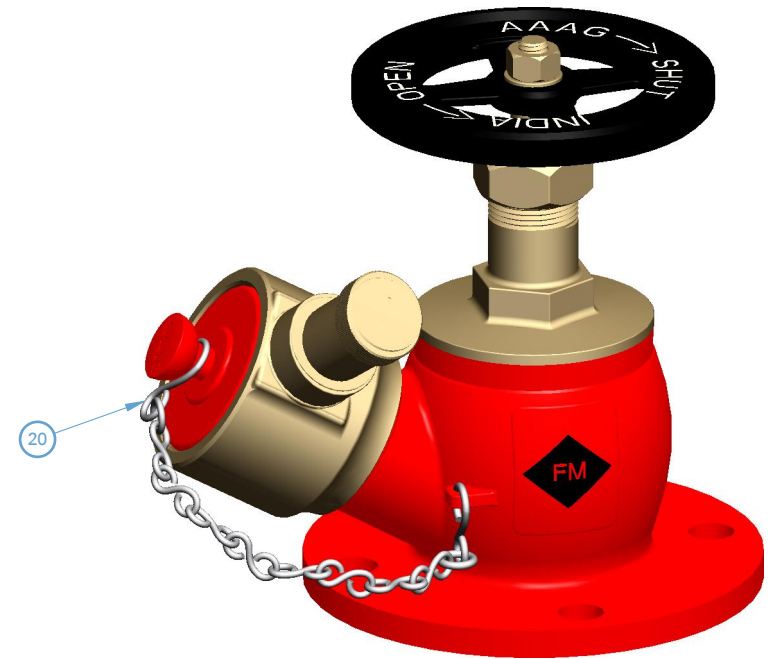
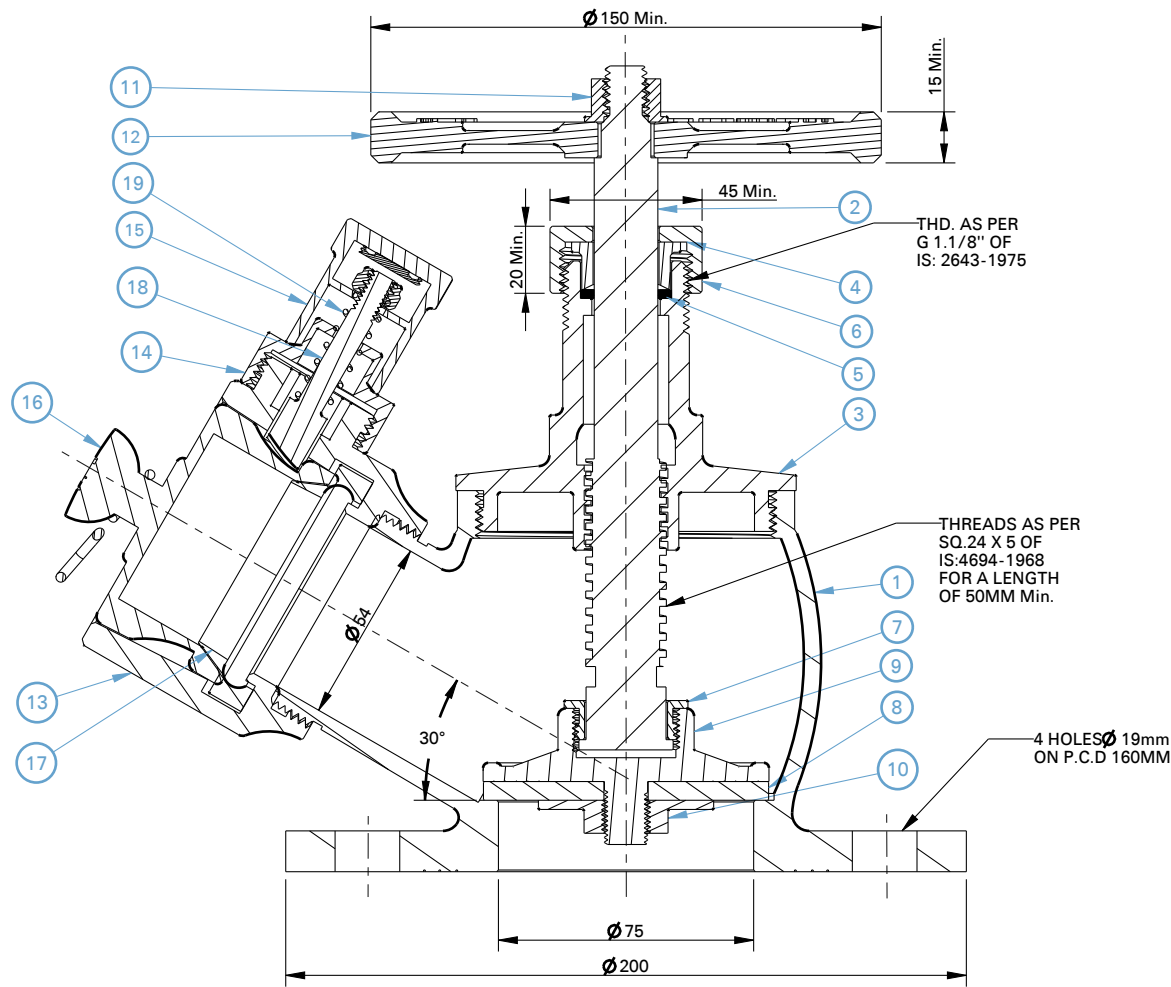
5.1	Body	Painted - Fire Red Color as per IS: 5 Shade No. 536
5.2	Wheel	Painted - Black Paint
5.3	Parts	Polished

6.0 APPROVALS & MARKING

6.1	Approvals	FM Approved (No. 0003040344)
6.2	Marking on Hydrant valve	BHOJEBROS / Size/ Year of Manufacture/ FM Mark/ AI No

7.0 WARRANTY

7.1	Warranty & Guarantee	12 Months from the date of supply
-----	----------------------	-----------------------------------



HYDRAULIC TEST:

Dimensional Check	Dimensions as per SBJ Drawing No. (See below)
Seat Leakage Test	12.3 kgf/cm ² for 5 minutes.
Valve Body Test	50 kgf/cm ² for 5 minutes.
Stem Seal Test	21 kgf/cm ² for 5 minutes. 72 hours aging at 120° F, then repeat test.
Torque Test	Sealing of seat at max. 75 ft/lb.
Documentation	internal inspection report, supplier's certificates, approved laboratory test certificates.

1	BODY	Red Brass Casting (GM), SAE Std No.40	11	HEX.NUT	M.S.
2	SPINDLE	BRASS, SAE Std No.72	12	HAND WHEEL	Cast Iron
3	BONNET	Red Brass Casting (GM), SAE Std No.40	13	FEMALE OUTLET	Red Brass Casting (GM), SAE Std No.40
4	GLAND BUSH	Red Brass Casting (GM), SAE Std No.40	14	LOWER LUG	Red Brass Casting (GM), SAE Std No.40
5	GLAND PACKING	ASBESTOSE ROPE	15	UPPER LUG	Red Brass Casting (GM), SAE Std No.40
6	GLAND NUT	Red Brass Casting (GM), SAE Std No.40	16	BLANK CAP	PVC
7	CHECK NUT (SPINDLE)	Red Brass Casting (GM), SAE Std No.40	17	RUBBER RING	Natural Rubber
8	SEAT WASHER	Natural Rubber	18	CAM TOOTH	Red Brass Casting (GM), SAE Std No.40
9	STOP VALVE	Red Brass Casting (GM), SAE Std No.40	19	SPRING	P.B WIRE, SAE Std No.72
10	SEAT CHECK NUT	Red Brass Casting (GM), SAE Std No.40	20	CHAIN	GALVANIZED
NO.	DESCRIPTION	MATERIAL	NO.	DESCRIPTION	MATERIAL
PART LIST			PART LIST		



Shah Bhogilal Jethalal & Bros.

AHMEDABAD

TITLE :

Hydrant Valve, Single Outlet (63 mm),
Gunmetal, FM Approved

SCALE	DRAWING NO:	SHEET	REV.
N.T.S	G104-63FM	1 OF 1	0